

Advanced Graphics Display Technology

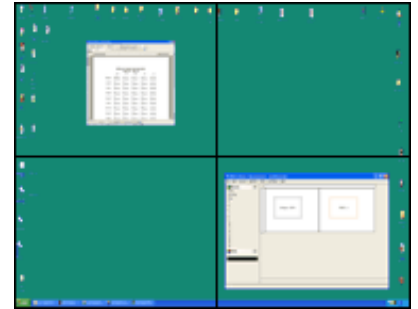
Datapath iH4 Range



The Datapath iH4 range of graphic cards provide high level multi-screen capabilities for complex data/video wall applications or multi-screen desktop applications. Using multiple iH4 cards it is possible to spread the Windows® desktop across 40 screens. The construction of the multi-screen system can be arranged in any rectangular format. The iH4-PRO and the iH4-DIG provide options for video overlays.

The Datapath iH4

- 4 port graphics adapter.
- 4 x 64bit Savage4-PRO graphics processors each with 16MB of memory (Total 64MB).
- 4 DVI outputs. Each supporting up to 1280 x 1024 (digital) and 1600 x 1200 (analog).
- Up to 10 iH4 cards can be used to support a maximum of 40 screens from a single PC.
- Use with the VQS-01 to increase the number of display channels to a maximum of 160.



The Datapath iH4-PRO

In addition to the above iH4 specifications, the iH4-PRO provides high quality video overlays enabling the display of live video sources.

- 4 high quality video overlays (1 per screen). Overlays can be sized and positioned anywhere on the wall (only one video overlay per screen).
- 4 composite video or 2 S-Video inputs using the Video Input Module (VIM) option.
- Increase the number of video inputs to 16 or 32 by using the Datapath VisionSwitch or VisionSwitch32 card.
- Supports PAL, NTSC and SECAM.
- Up to 10 iH4-PRO cards can be used to support a maximum of 40 screens and 40 video overlays from a single PC.



The Datapath iH4-DIG

The iH4-DIG has all the specifications of the iH4-PRO and in addition:

- 4 digital video inputs for connection to the Datapath Mosaic card. The Mosaic card, combined with the iH4-DIG, allows up to 9 video overlays per screen. It is possible to connect a maximum of 4 Mosaic cards to each iH4-DIG.
- Add on options: Mosaic, VisionSwitch and VIM.



Software

Drivers

- Special multi-screen display driver for use with Windows® 2000, Windows® Server 2003 and Windows® XP. The function of the display driver is to present one large desktop to the Windows operating system. The multi screen driver will support up to a maximum of 40 screens.
- A standard native Windows® 2000/XP driver that will support up to 6 screens.

Wall Control

The iH4 card is supplied with a free version of Wall Control without the advanced features.

- Wall Control presents a representational window of the entire display wall showing position and size of video overlay windows, RGB windows (if used in conjunction with the Vision RGB product) and control dialogs for VisionSwitch.
- Datapath Wall Control software enables you to configure your multi-screen display, launch video overlays and create a wall layout configuration. With the full version it is possible to save layouts and recall them for future use and also operate Wall Control on a remote PC via a network connection.

Wall Control is available in three versions:

- Wall Control - Free version.
- Wall Control-PRO-SK - Licensed version with a software key code.
- Wall Control-PRO-HK - Licensed version with a hardware USB key (dongle).

To purchase the full versions of Wall Control contact our sales department at:

sales@datapath.co.uk

Twin Control

- A stand alone desktop management software program that controls the position of application windows, system messages and dialog boxes of your multi-screen display.

iH4 Range Technical Specification

Bus Interface	32bit - 33Mhz PCI adapter V2.2 Compliant
Size	260 x 100mm
Power	8.3Watts (iH4), 14Watts (iH4-PRO/DIG)
Power Requirements	iH4 - +5V at 1.2A max, +3.3V at 0.7A max iH4-PRO/DIG - +3V at 2A max, + 5V at 1.2A max
Operating Temperatures	0 - 35 deg C
Storage Temperatures	-20 - 70 deg C
Relative Humidity	5% to 90% non-condensing

Models

iH4	iH4 supplied with 2 analog VGA splitter cables (RGB-S-Cable)
iH4-DVI	iH4 supplied with 2 DVI splitter cables (DVI-cable)
iH4-PRO	iH4-PRO supplied with 2 analog VGA splitter cables (RGB-S-Cable)
iH4-PRO-DVI	iH4-PRO supplied with 2 DVI splitter cables (DVI-cable)
iH4-DIG	iH4-DIG supplied with 2 analog VGA splitter cables (RGB-S-Cable)
iH4-DIG-DVI	iH4-DIG supplied with 2 DVI splitter cables (DVI-cable)

Application Guide

Application	Recommended Products
Multi-screen graphics only	1 to 10 iH4 cards. Supports from 1 to to 40 screens
Multi-screen graphics with 1 video window per screen and 4 video inputs	1 to 10 iH4-PRO and VIM-1, or VIM-8 supports from 1 to 40 screens and 1 to 32 video windows.
Multi-screen graphics with 1 video window per screen and 16 or 32 video inputs	1 to 10 iH4-PRO and 1 or 2 VisionSwitch cards supports from 1 to 40 screens and 1 to 32 video windows and 16 video inputs with 1 VisionSwitch and 32 video inputs using 2 VisionSwitch cards
Multi-screen graphics with up to 9 video windows per screen and up to 144 video inputs	1 to 10 iH4 cards and 1 to 16 Mosaic cards. Each mosaic card provides 9 video windows. A maximum of 4 Mosaic cards can be connected to the iH4-DIG

Cable Accessories

Various cable accessories can be ordered separately as follows:

DVI-cable	2 way DVI splitter cable
RGB-S-cable	2 way analog VGA splitter cable
HCS-Cable	Clock link cable for multiple iH4 cards. The HCS-cable is supplied as standard with the iH4-PRO and iH4-DIG

VQS-01 Controllers

The iH4 can also be used with up to 4 x VQS-01 controllers allowing you to increase the number of displays from 4 to 16 from a single iH4 card. For wall applications requiring support for a large number of displays, it is possible to use up to 10 iH4 cards and 40 x VQS-01 controllers. This configuration provides support for up to 160 displays.

Note: The maximum resolution per display when using the VQS-01 is 1024 x 768.

Main Sales Department and UK Headquarters

Datapath Limited,
Alfreton Road
Derby, DE21 4AD
England
Tel: (+44) (0) 1332 294441
Fax: (+44) (0) 1332 290667
email: sales@datapath.co.uk
Web: <http://www.datapath.co.uk>

German Office

Friedrich-Ebert-Straße 21
D-64846 Groß-Zimmern,
Germany
Tel: (+49) (0) 6071 9630 0
Fax: (+49) (0) 6071 9630 20
email: ws-datapath@t-online.de
(Supports Germany, Austria and Switzerland)

French Office

7 Rue des Pinsons,
78990 Elancourt, France
Tel: (+33) 1 30 13 89 34
Fax: (+33) 1 30 13 89 35
email: datapathfrance@sqynet.com